

kcICON Project At-A-Glance



BACKGROUND

- Construction on this Missouri Department of Transportation (MoDOT) project broke ground April 18, 2008, and is scheduled to be complete July 31, 2011.
- The project name refers to the "interstate connections" of I-29/35 as well as the iconic nature of the cable-stayed bridge being built.
- Project corridor spans a 4.7 mile (7.6 km) section of roadway from just north of the Armour Road/M-210 interchange to the northeast edge of the downtown loop. Approximately 102,000 vehicles travel this stretch of roadway each day.
- Design-build contractor is Paseo Corridor Constructors, a joint-venture partnership of Clarkson Construction Co., Massman Construction Co. and Kiewit Construction. Project design is being done by Parsons Transportation Group and TranSystems.

SCOPE

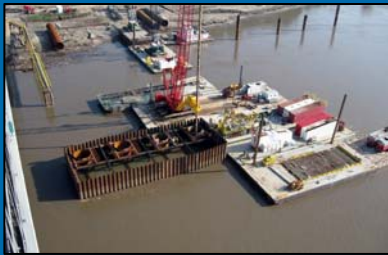
- The new Missouri River Bridge will be a two-span, cable-stayed structure with a 550-foot (168 meter) main span and a side span of 451-feet (138 meters).
- This project will widen the I-29/35 corridor from two lanes in each direction to three. The new river bridge will be 124-feet wide, capable of carrying eight traffic lanes and a pedestrian/bicycle path should future highway widening and path connections be made to the north and south of the new structure.
- The superstructure will be supported by 40 stays that radiate in a semi-fan arrangement from a single reinforced concrete, delta-shaped pylon.
- The top of the delta pylon will be about 316 feet (96 meters) above the river level.

GOALS

- Deliver the Interstate 29/35 corridor improvements within the total program budget.
- Construct a landmark Missouri River bridge(s) that can be reasonably maintained to provide more than a century of useful service.
- Maximize safety, mobility, aesthetic and capacity improvements in the corridor.
- Engage stakeholders and the community to successfully develop and deliver the project.
- Meet or beat the project completion date of October 31, 2011.

FINANCING

- \$245 million project includes \$195 million in state funds and \$50 million in federal SAFETEA-LU funds.
- In recognition of his key role in securing federal funds, the new bridge structure will be named after U.S. Senator Christopher S. Bond.



www.kcicon.com

816.841.8888



103 W. 26th Ave. North Kansas City, MO 64116 816.841.8888