



## *kcICON Quarterly Project Newsletter* Summer 2008 Issue - Tuesday, July 15, 2008

### In This Issue

[What's New?](#)

[Workforce Development](#)

[Construction Practices](#)

[Inside the Work Zone](#)

[Did You Know?](#)

### Join Our List

Join Our Mailing List!

### For more information:

[www.kcicon.com](http://www.kcicon.com)

[info@kcicon.com](mailto:info@kcicon.com)

**816-841-8888**

You are receiving this e-mail as a means of keeping you updated on the activities associated with MoDOT's kcICON (Interstate Connections 29/35) Project.

### What's New?

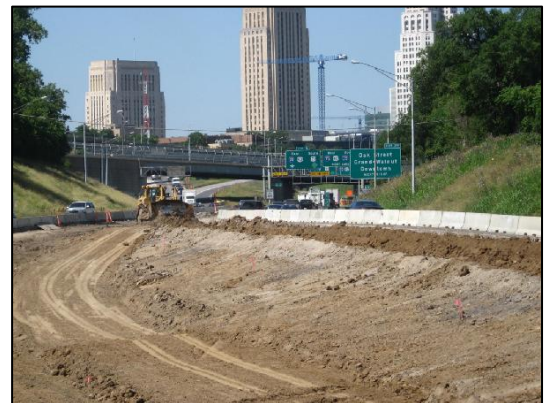
With design work about 50 percent complete, construction on the kcICON Project is becoming more evident as work moves into other areas along the project corridor.

This spring, much of the work has been focused on the extreme north and south limits of the project which extends from just north of the Armour/210 interchange to the northeast corner of the downtown business loop.

The southbound on-ramp and off-ramp in the northwest corner of the Armour/210 interchange were closed last month and the asphalt pavement removed in preparation for relocating utilities and grading work.

Other work scheduled for this summer includes:

- Grading, drainage line installation and retaining wall construction adjacent to the northbound lanes between Levee and Bedford. To accommodate this work, the Levee Road on-ramp to northbound I-29/35 has been closed and will remain closed for about one year. Go to <http://www.kcicon.com/detour.html> for detour route information.
- Restriping and narrowing lanes in both directions of I-29/35 between 16th Avenue and Levee Road to set temporary concrete barriers and remove existing center median barrier.
- Continuing grading and paving operations in the center median area between The Paseo and Independence Avenue.



*Grading operations take place in the shadow of downtown, as the center median area is prepped for the asphalt paving work that will be done later this summer to widen southbound I-29/35 leading into the downtown loop.*

- Widening work along the outside lanes of southbound I-29/35 over Armour Road.
- Building a cofferdam structure in the river and starting construction of the new bridge piers.
- Closing the Bedford Avenue off-ramp from northbound I-29/35 for drainage and wall work.

## Workforce Development

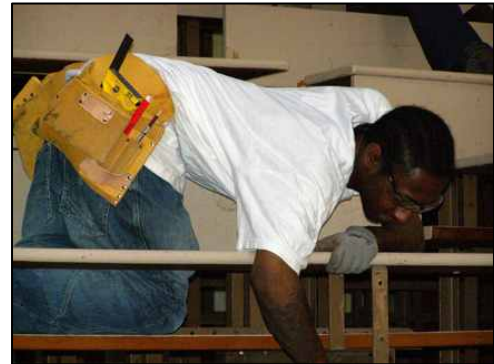
With the June 23 start of trade-specific classes at the Full Employment Council (FEC), the Missouri Department of Transportation is working toward the goal of increasing the number of women and minorities working on heavy construction projects statewide.

The classes, developed by the FEC in partnership with The Builders' Association and the Greater Kansas City AFL-CIO, cover basic academic subjects like math and reading for comprehension and research, along with a focus on developing knowledge and skill sets relative to specific construction trades.

The 30 individuals enrolled in the current class series are training in one of three trades including electricians, sheet metal workers and carpenters. Future classes will focus on additional construction disciplines.



*Helping repair bleachers at Nowlin Middle School as part of the Project Prepare program are from left to right: Brian Wilson, Jesse Jaschke, Kenny Lovelace, Dennis Jackson, Terrance Nelson, Ashton Shelby and Arthur Bailey.*



*Ashton Shelby, one of seven carpenters-in-training, repairs bleachers at Nowlin Middle School in Independence, Mo. MoDOT is working with Project Prepare to increase the number of women and minorities placed on the kcICON project and other heavy construction projects in Missouri.*

Students attend classes daily, and upon their completion in early August, could be placed on the kcICON Project or any of the other heavy construction projects in Missouri.

"We are extremely pleased to work with the Full Employment Council in support of MoDOT's workforce development pilot program here in Kansas City," said kcICON Project Director Brian Kidwell.

MoDOT has committed up to \$1.25 million towards preparing, training and retaining a diverse workforce in conjunction with the kcICON Project.

A similar workforce development initiative was undertaken in St. Louis in 2006 as part of the state's efforts to rebuild the I-64/US 40 interchange.

The number and frequency of classes will be determined by the needs of the project. Completed applications are accepted any time and should be taken to any FEC/Missouri Career Center location. A program application and list of sites accepting applications can be found online at [www.kcicon.com/workforce.html](http://www.kcicon.com/workforce.html).

## Construction Practices



*Erosion control measures being used on the project include silt barriers around storm sewer inlets to help prevent dirt from clogging the drains (left) and using straw "blankets" to help stabilize dirt slopes. This erosion control blanket was installed last month in the southwest corner of the Armour Road interchange. After grading the site and putting down seed, Erosion Control Inc. crews put down 1,760 sq. yards of this material to provide temporary slope stabilization for six to nine months.*

## Inside the Work Zone



Anyone driving south on I-29/35 at the Armour Road interchange the afternoon of Monday, June 30, might have seen this tall pole extending above the highway overpass.

This "pile driving" test in the northwest corner of the Armour/210 interchange involved calculating the compressions against the concrete post created by the hydraulic hammer as well as the ground. This information will be used in fine-tuning the design and construction processes for the concrete piers for the new southbound highway bridge over Armour Road.

It took 1,858 strikes of the hydraulic hammer to drive the 65-foot tall post 58 feet into the ground.

Similar tests are being conducted at three other locations along the corridor where concrete girder bridges will be built - near 14th Avenue, Bedford Avenue and Front Street.



*Several women are playing key roles in the engineering and construction of the kcICON Project - proving this isn't just "man's work." Helping perform each of the pile driving tests are (from left): Richa Bhatnagar, Terracon; Delores Cook, Clarkson Construction; Elizabeth Smith, Terracon; Sheryl Gallagher, Geotechnology; and Dee Moye, Clarkson Construction.*

## Did You Know?

The Kansas City Area Transportation Authority is running a new 40-seat bus on most of its weekday 142 routes along North Oak Trafficway. This upgrade is being paid for in part by the Missouri Department of Transportation as a way to provide transit opportunities to more people who can now avoid the I-29/35 corridor as construction activities increase.